



**DEPARTMENT
OF HEALTH**

CENTER FOR HEALTH EQUITY

Envisioning Health Equity: 2018 & Beyond

April 25, 2018



Facebook.com/MNHealth



@MNHealth

@BThao_MNHealth

*Tweet us during the webinar with **#MNHealthEquity***

**Partnering for
Health Equity
means stronger,
safer and healthier
communities.**



**NATIONAL
MINORITY
HEALTH
MONTH**

Partnering for Health Equity | April 2018



#NMHM18

1. CHE Vision for Health Equity
2. Moving from Theory into Action
3. Opportunities to Partner

What is the Center for Health Equity?

Advancing Health Equity in Minnesota

Report to the Legislature

MDH directed by Legislature in 2013 to prepare a report on Advancing Health Equity in MN

1. To provide an overview of MN's health disparities and health inequities
2. To identify inequitable conditions that produce health disparities
3. To make recommendations to advance HE in MN

What is the Center for Health Equity? (continued)

- Current evolution of former Office of Minority & Multicultural Health (OMMH)
- Established by the Commissioner of Health in 2013 to bring an overt and explicit focus to the efforts of MDH to advance health equity in MN.
- Works to achieve MDH vision of:
 - “Health equity in Minnesota, where all communities are thriving and all people have what they need to be healthy”

CHE Staff



Bruce Thao
Director
He/Him



Sara Chute
Asst. Director
She/Her

CHE Staff (continued)



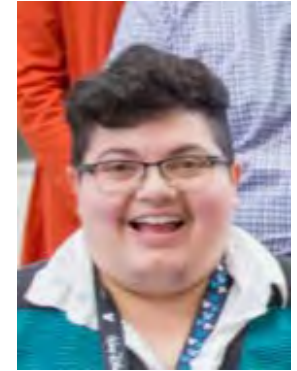
Mohamed Hassan
Grant Manager
He/Him



Bridget Roby
Grant Manager
She/Her



Darwin Flores Trujillo
Health Equity Analyst
He/Him



Shor Salkas
Health Equity Planner
They/Them/Shor



Mia Robillos
Research Scientist
She/Her



Helen Jackson Lockett-El
Community Engagement Planner
She/Her



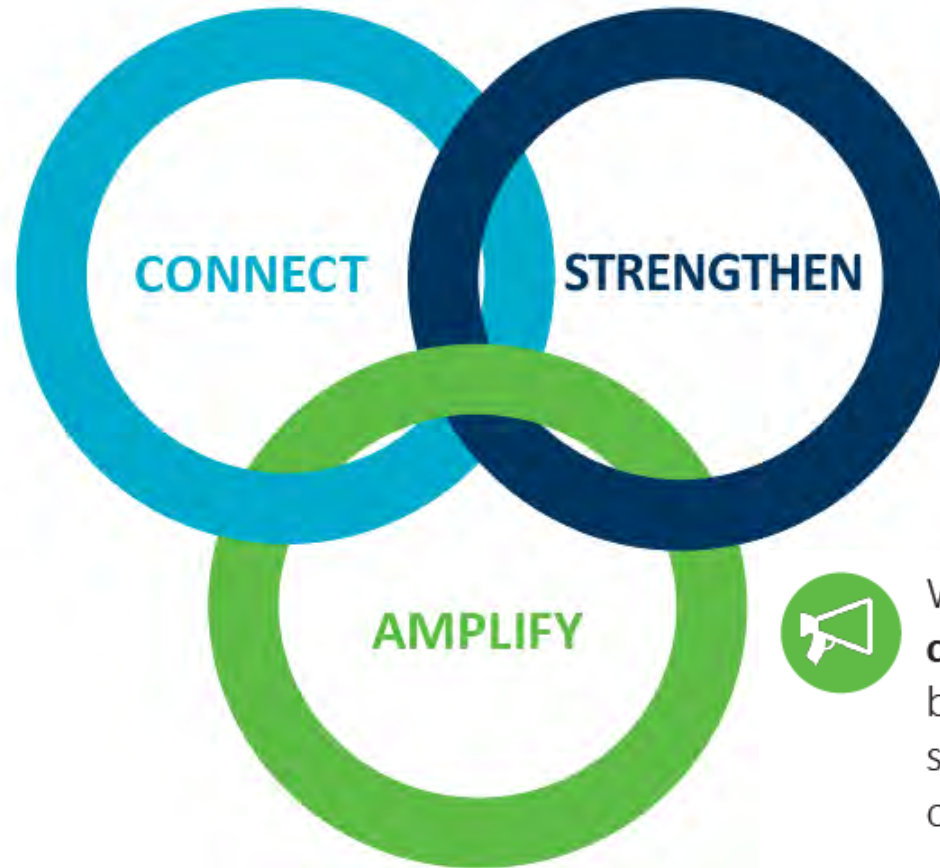
Christy Nguyen
Administrative Coordinator
She/Her

- **MDH's mission** is protecting, maintaining and improving the health of all Minnesotans.
- **MDH's vision** is for health equity in Minnesota, where all communities are thriving and all people have what they need to be healthy.
- The **Center for Health Equity's mission** is to **CONNECT, STRENGTHEN & AMPLIFY** health equity efforts within MDH and across the state of MN.

CHE Mission (continued)

The Center for Health Equity's mission is to **CONNECT, STRENGTHEN & AMPLIFY** health equity efforts within MDH and across the state of MN.

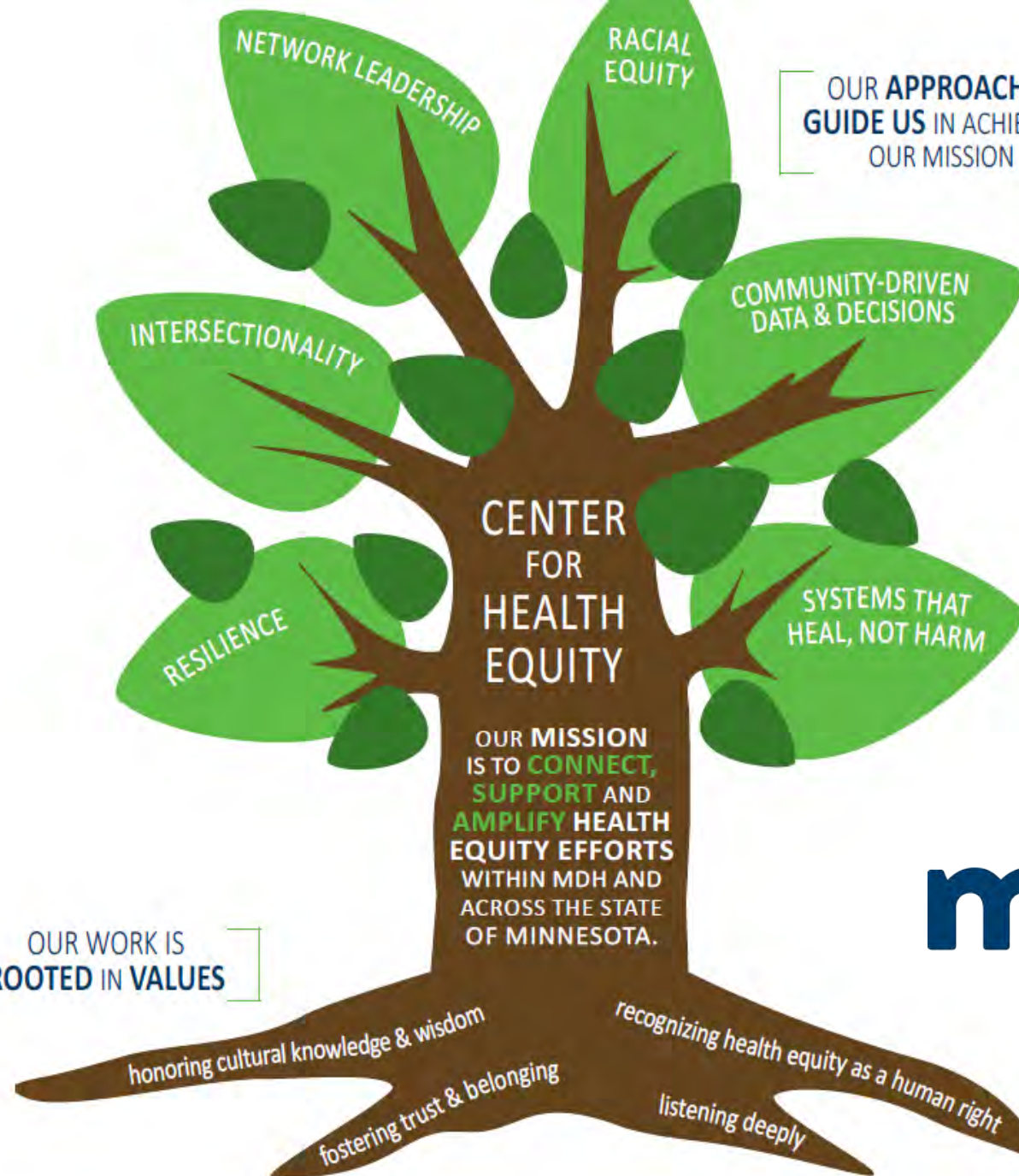
We are a **network hub**, leading, connecting and strengthening networks of health equity leaders and partners across MDH and Minnesota communities.



We provide **leadership in advancing health equity** and cultivate health equity leaders within MDH and across Minnesota communities.



We **amplify the work of communities** most impacted by health inequities and support them to drive their own solutions.



mn DEPARTMENT OF HEALTH
CENTER FOR HEALTH EQUITY

[CLICK HERE to download PDF](#)

CHE Approaches

- Racial Equity
- Resilience
- Intersectionality
- Network Leadership
- Community-driven data & decisions
- Systems that heal, not harm

CHE Approaches (continued)

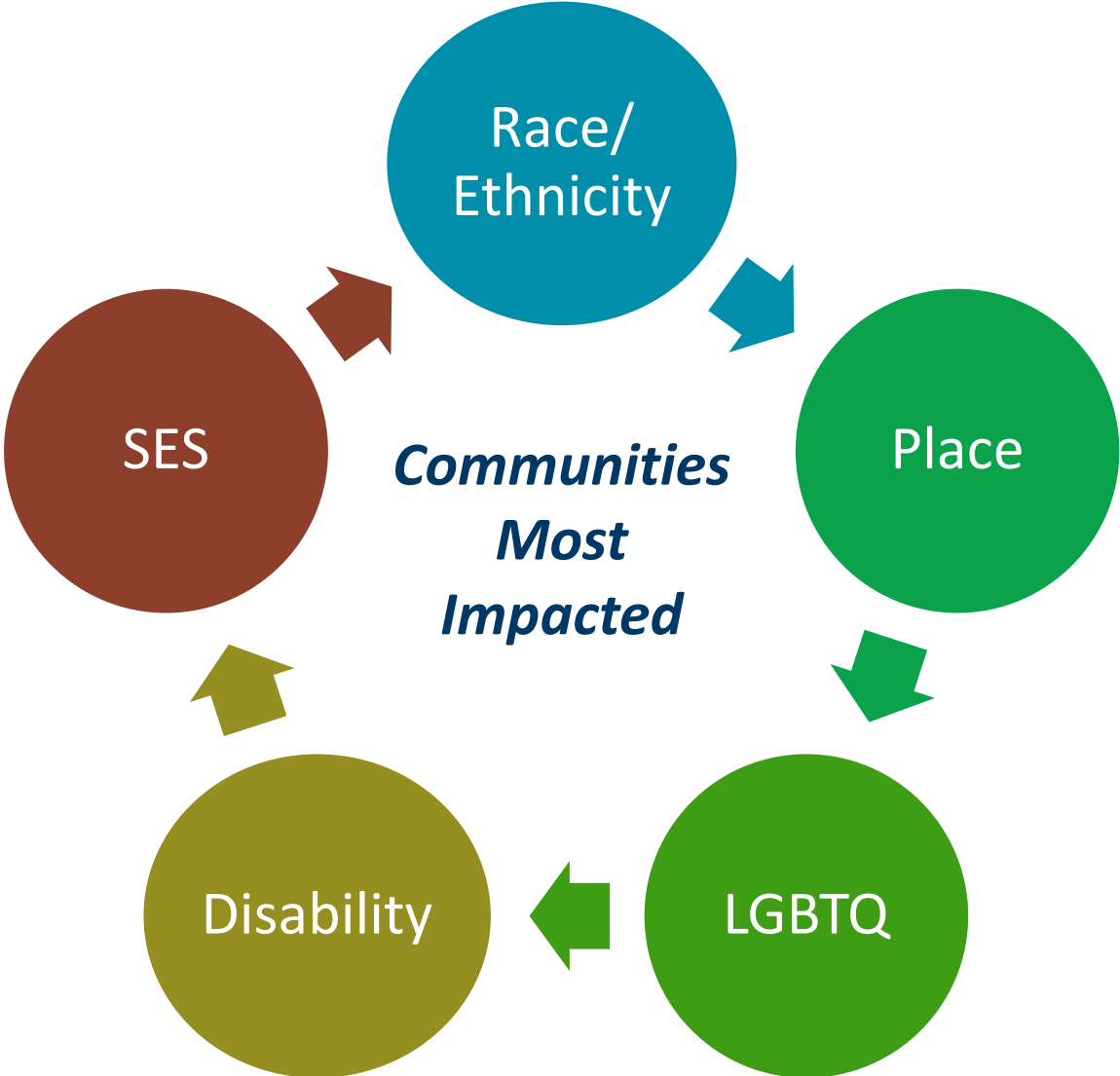
Racial Equity

- No health equity without racial equity

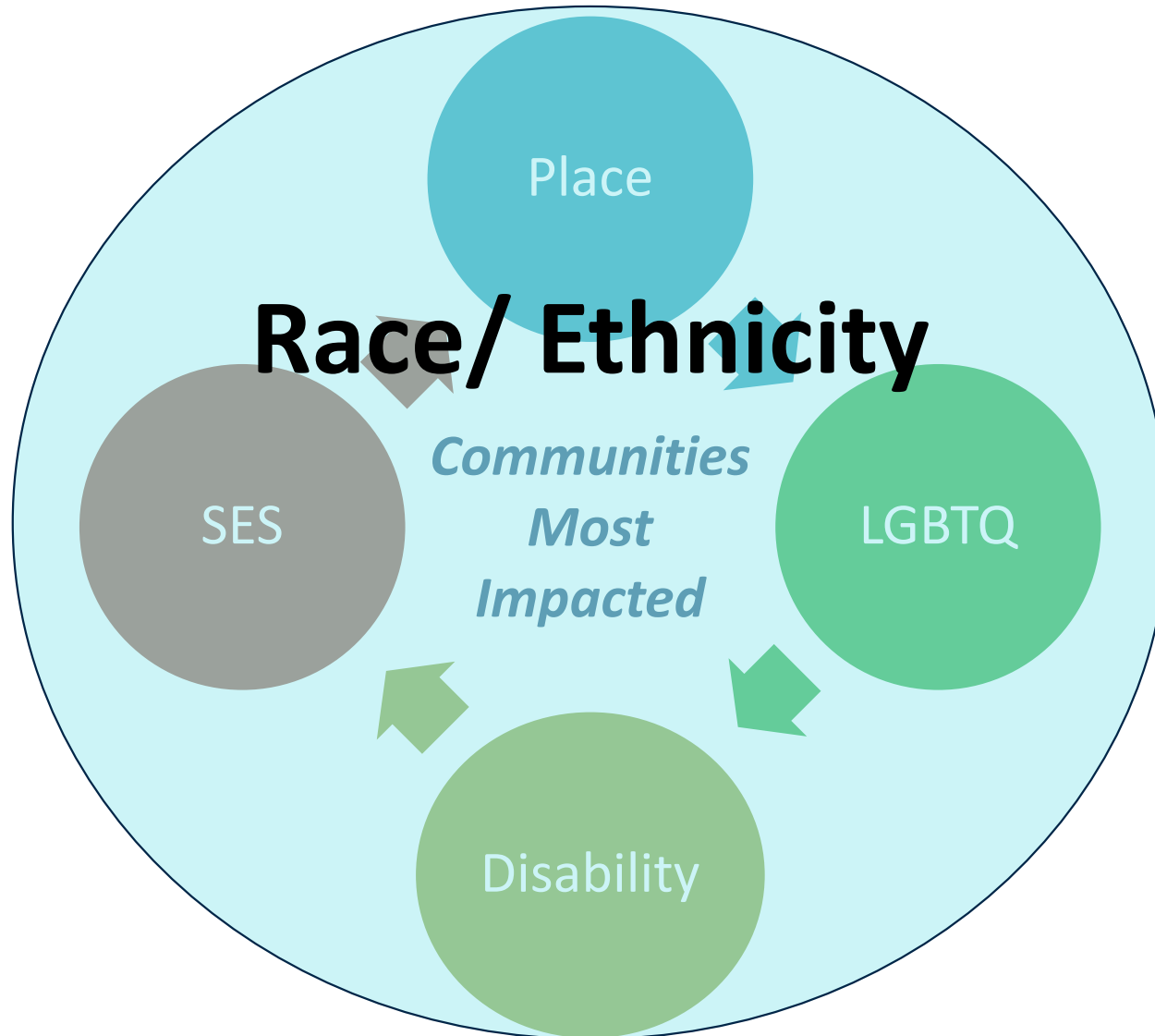
Resources:

- [Link to Advancing Health Equity Legislative Report](#)
- [Racial Equity Alliance website](#)
- [Link to Racial Equity Tools website](#)

Priority Populations



Priority Populations (continued)



Resilience

- Root of inequities tied to legacy of historical and intergenerational trauma
- Honor both vulnerabilities (risk-factors) & resiliency (strengths)
- Leverage strengths-based approaches to advance health equity

Resources:

- [Model of Historical Trauma for Public Health](#)
- [Asset-based Community Development](#)
- [Lesson on Historical Trauma](#)
- [MPR news story about historical trauma](#)
- [Link to a book about historical trauma](#)

Intersectionality

- Holding multiple identities and lived experiences
- Individual, community & systems-level factors
- Yes AND...

Resources:

- [Intersectionality and Health Equity](#)
- [Health Inequities, Social Determinants, and Intersectionality](#)
- [Webinar: Intersectionality and health equity: Exploring opportunities for public health practice and policy](#)
- [Intersectionality-based policy analysis](#)

Network Leadership

- Across and within communities, sectors and systems
- Adaptive, collaborative, inclusive

Resources:

- [RWJF & LLC](#)
- [Culture of Health Equity website](#)
- [Influencing a health equity agenda using a network leadership framework](#)

Community-driven data & decisions

- Data collection, analysis & reporting grounded in community

Resources:

- [MDH Health Equity Data Analysis](#)
- [Voices for Racial Justice](#)

Systems that heal, not harm

- Health equity in all policies in order to strengthen communities, not marginalize or divide

Resources:

- [Movement for a Regenerative Economy](#)
- [Healthy MN Partnership](#)

- Honoring cultural knowledge & wisdom
- Fostering trust & belonging
- Listening deeply
- Recognizing health equity as a human right

POLL!

What do you think about our new mission/
values/ approaches?

- Amazing! Can't wait to partner with CHE!
- Intrigued. Would like to learn more.
- Unsure. It's kind of confusing.

A group of business professionals are gathered around a table in a meeting. In the foreground, a woman in a green shirt is gesturing with her hands. Behind her, a man in a blue striped shirt looks on. In the background, another man in a blue shirt is smiling. To the right, a man in a blue shirt is looking down at a laptop. A whiteboard with a diagram is visible in the background. A dark blue semi-transparent box is overlaid on the center of the image, containing the text "Moving Theory into Action".

Moving Theory into Action

I-HEALTH – Internal Health Equity Advisory & Leadership Team Hub

- 1) Oversee implementation of [MDH strategic plan](#) to advance health equity within the agency
- 2) Streamline coordination of health equity activities, policies and projects across the agency
- 3) Foster greater collaboration amongst MDH divisions/offices around health equity



Sara Chute
Asst. Director

Health Equity Community of Practice (HECoP)

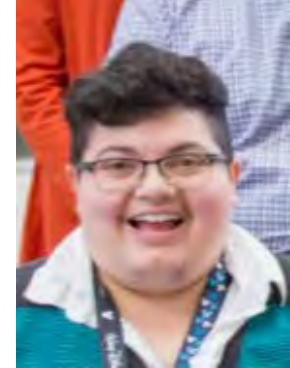
- Share resources, challenges and successful practices
- Practice flexing equity muscles
- Add tools to toolkit



Sara Chute
Asst. Director

Health Equity Coaching & Training

- Coaching & consultation across MDH
 - Program assessment
 - Policy assessment
- Advancing Racial Equity training – 1,500+ staff
- Health Equity E-Learning Curriculum



Shor Salkas
Health Equity Planner

Community Voices and Solutions (CVAS) Initiative

- Community-led, community-driven
- Shared leadership & decision making
- Cultural wisdom & lived experiences
- Leaders develop & implement long-lasting, sustainable solutions
- Impact policy & systems change



Helen Jackson Lockett-El
Community Engagement Planner

Community Voices and Solutions



[Link to view the list of 23 Members](#)

[Link to learn more](#)

External (Mohamed & Bridget)

Eliminating Health Disparities Initiative (EHDI) Grant

- Established in 2001
- \$5 million in annual funding to improve health status of Populations of Color and American Indians
- Current grantee snapshot
- Grantee highlights



Mohamed Hassan
Grant Manager



Bridget Roby
Grant Manager

More info:
<http://www.health.state.mn.us/divs/che/ehdi/>

Health Equity Advisory & Leadership (HEAL) Council

- 25 diverse members across the state
- Advise Commissioner of Health and MDH on health equity strategy

[HEAL Council page on MDH website](#)



Bruce Thao
Director



Training, Consultation, Connection

- Priority populations
- Non-profit organizations, community groups, FQHC's, clinics
- Health systems
- Schools/Universities
- Foundations/Funders
- Other government agencies; legislative workgroups; councils



Bruce Thao
Director

SECOND POLL!

I'm interested in learning more about:

- MDH internal health equity efforts
- External health equity efforts
- Both!

Opportunities!

- 2019 Eliminating Health Disparities Initiative RFP
 - Forthcoming Fall 2018
- Health Equity Leadership Network @ bushCON
 - Deadline to apply: May 2, 2018
 - [More info](#)
- Community Conversations
 - [Link to request](#)
- Health Equity Leadership Institute
 - [Link to register](#)
- Future webinars on CHE health equity approaches



2018 Health Equity Leadership Institute



Friday,
April 27, 2018

9 a.m. to 3 p.m.

TIES Grand Hall
1644 Larpenteur Ave. West
St. Paul, MN 55108



NATIONAL
**MINORITY
HEALTH
MONTH**

Partnering for Health Equity | April 2018

[Link to register](#)

Goals of event:

- Examine the state of equity in Minnesota.
- Provide a space for cross-sector collaboration.
- Explore how intersectionality expands our ability to achieve equity.
- Identify actions needed to move equity forward.

Sponsors:

- Minnesota Department of Human Services
- University of Minnesota Medical School's Program in Health Disparities Research
- Minnesota Department of Health, Center for Health Equity

THIRD POLL!

Are you interested in webinars on CHE health equity approaches?

- Yes! Where do I sign up?
- Not interested
- Prefer in-person workshops

Questions?

Connect With Us!

Emails, Phone Numbers, Request Form:

- [Link to MDH CHE contact information](#)

Center for Health Equity Listserv:

- [Link to sign up for Health Equity Listserv](#)

Additional Resources

- [MDH Health Equity Resource Library](#)
- [Health Equity Guide – MN Case Study](#)
- [MN Statewide Health Assessment](#)
- [Healthy MN Partnership](#)

Thank you!