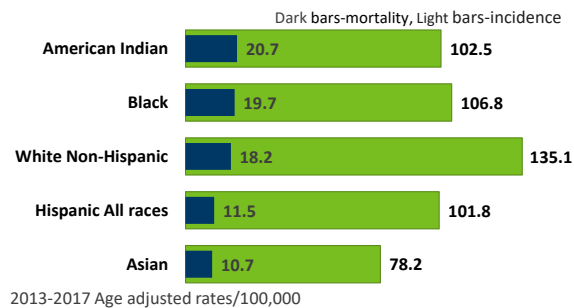


Breast cancer disparities in Minnesota women

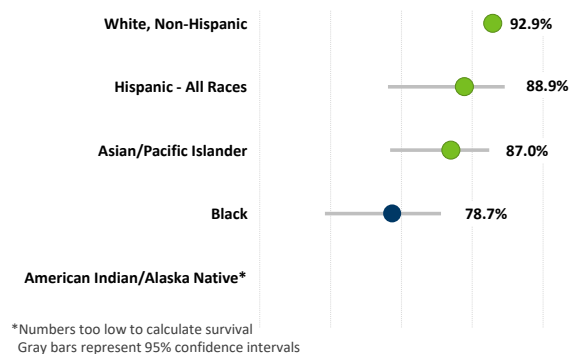
Breast cancer is the most common invasive cancer diagnosed in women across every racial and ethnic group. Outcomes are best when breast cancer is detected and treated early. However, the occurrence and survival of breast cancer is not the same for all groups of women in Minnesota.

Mortality rates are highest for American Indians. **Incidence rates** are the highest for whites.

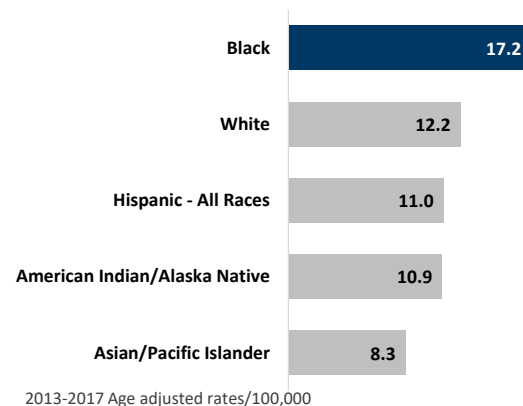


American Indian women are the most likely to die from breast cancer in Minnesota. During 2013-2017, Asian women had the lowest mortality and incidence rates.

The chance of surviving 5 years with breast cancer is higher when diagnosed early but is lowest in **Blacks**.



Black women have the highest rate of the triple negative subtype.



The triple negative subtype (HR-, HER2-) of breast cancer is the deadliest.

Screening guidelines

Mammogram screening guidelines for women at average risk by age group (recommendations vary slightly by US public health agencies):

- **All women should consult a health care provider for their individual screening recommendations**
- **40-49:** option to start screening with a mammogram every year
- **50-74:** start mammogram screening (yearly or every other year according to health care provider)
- **75+:** consult a health care provider

Screening resources

- [MDH Sage Cancer Screenings](#)
- [American Indian Cancer Foundation's Screen Our Circle Program](#)
- [Minnesota Department of Human Services Medical Assistance for Breast or Cervical Cancer](#)

Data and sources

- [Minnesota Cancer Reporting System](#)
- Relative survival based on cases diagnosed 2010-2016 with follow up through 2017
- Rates are per 100,000 and age-adjusted to the 2000 US Standard Population (19 age groups - Census P25-1130) standard
- [CDC Breast Cancer Screening Guidelines for Women](#)

Minnesota Department of Health
Minnesota Cancer Reporting System
PO Box 64882
St. Paul, MN 55164-0822
651-201-5900
health.mcrs@state.mn.us
www.health.state.mn.us

9/17/2020

To obtain this information in a different format, call 651-201-5900.

The collection of Minnesota Cancer data was supported by Cooperative Agreement Number, 1NU58DP006337 from the Centers for Disease Control and Prevention (CDC). The contents of this work are solely the responsibility of the authors and do not necessarily represent the official views of the Centers for Disease Control and Prevention or the Department of Health and Human Services.